

Glen Lake Association Alligator & Inspiration

Glen Lake: Yesterday, Today and Tomorrow



A heavy snow on January 11, 2008 after a day of temperatures in the upper forties.

A message from the president

We face continuing and new challenges in the LONG VIEW of our watershed. One of these challenges is the understanding and care of the Upland Groundwater Recharge Areas of our watershed. Groundwater is the water beneath the earth's surface, often between saturated soil and rock that supplies wells and springs. The groundwater in our watershed has been effected by a seven year drought. As I write it is pouring most welcome rain into our lakes and our watershed groundwater, but it is also an unseasonably forty-one degrees with no freeze of Big Glen in sight, so evaporation from the lakes, river, and streams continues. (freeze-over 1/24/08).

WHAT DO THE UPLAND GROUNDWATER RECHARGE AREAS OF THE GLEN LAKE-CRYSTAL RIVER WATERSHED DO FOR YOU?

Quoting from your own Glen Lake-Crystal River Landowner's Handbook which Mark Stone and I wrote in 2005, "The upland groundwater recharge areas are chiefly located in upper elevations of the GL-CR Watershed. The highly permeable soils and the topography of these areas strongly favor the fast infiltration of rainwater into the groundwater. A large portion of Glen Lake's baseline water supply originates in these upland recharge areas. It is also likely that many drinking-water wells are directly affected by these areas. Many of these areas are also forested and/or have steep slopes that are highly susceptible to erosion. Because of their high elevation and scenic views, the upland recharge areas are among the most highly desirable building sites in the watershed (after shorelines).

...continued on page 2



The Glen Lake Association, Inc. is a non-profit organization dedicated to the protection, preservation and continued improvement of the beautiful Glen Lake area.

Winter 2008	A Message from the President	1 & 2
	Stewardship Checklist	2
	Karner's Korner	3
	GLA Stewardship Awards	4 & 5
	GLA Science Resource Panel	6
	Membership Contributions	7 & 8
	Endowment and Preservation Contributions	9 & 10

President's message, continued ...

Balancing the inevitable development of the recharge areas with the protection of forest cover and erodable slopes is critical to the health of the Glen Lake-Crystal River Watershed. Since, at present, there are relatively few regulations protecting these critical upland areas, responsibility for the conservation-minded development and protection of these areas falls more squarely on the shoulders of the landowner to protect the quality and character of our watershed from inappropriate development.”

One of the goals of the Glen Lake Association's Long Range Planning Committee is to protect the hills around Glen Lake from development that would detract from the area's beauty, such as the removal of large tracts of trees on hilltops and wooded hillsides.

Property important to water quality, wildlife, and the scenic beauty of the Glen-Lake Crystal River Watershed can be protected by working directly with the Leelanau Conservancy. The conservancy administers the land conservation tools - the legal mechanisms through which watershed landowners can permanently protect the conservation values of their land that are important to sustaining the quality of the watershed. Through

the Leelanau Conservancy significant conservation easements have already been accomplished to protect portions of the Crystal River, Hatlem Creek, and east and southeast portions of privately owned ridgelines and forested hillsides. The Long Range Planning Committee of the Glen Lake Association and the Conservancy will continue to work closely together to protect ridgelines and forested hillsides.

Our thanks and gratitude go out to all of the landowners of the watershed who take the LONG VIEW of preserving and protecting our uplands for their value as scenic views and groundwater resource by granting conservation easements to forever protect the quality and character of their land from inappropriate development; and to those who take the personal responsibility of cutting as few trees and disturbing as little of the land as possible in building and caring for their own property.

Sarah Litch
President

.....



Stewardship Checklist

On page four of your **Glen Lake-Crystal River Watershed Stewardship Action Checklist** the first action checklist item reads:

#1 Keep as many trees and shrubs around buildings to screen visibility from the lake and river as possible.

Three ways to accomplish the preservation of hilltops and wooded hillsides and shorelines surrounding the lakes, river and streams of the Glen Lake-Crystal River Watershed are:

- Buying land and putting it in a conservancy land protection agreement
- Keeping as many trees and shrubs as necessary around your home and out buildings to screen their visibility from the lake and river
- Developing an ordinance to protect hilltops and wooded hillsides in the watershed (being discussed in the GLA Long Range Planning Committee)

Besides their esthetic value, deep rooted trees, shrub, grasses, and plants are important in preventing erosion, holding water in the soil and absorbing nutrients to preserve water quality.



Our Changing Watershed

*Rob Karner, Glen Lake Association
and Watershed Biologist*

When I think of the “aging process” in human terms, it reminds me of how we change as time slips away. Often, aging is slowed down by our efforts of healthy diets, fitness routines, stress-free living, weight control, and even cosmetic intervention such as botox, nose jobs and a variety of plastic surgeries that give us the “youthful” look. Did you know all aquatic and terrestrial ecosystems go through an “aging process” as well?

Glen Lake, Fisher Lake, and the Crystal River are not immune to the aging process. Ecologists call this process succession. Succession is the sequential and predictable change in a living community or ecosystem over a given amount of time. Succession is driven by change. One such factor that is causing our watershed to change is drought. When evaporation exceeds precipitation over an extended period of time, drought will result in lower lake levels.

When lake and river levels are lowered during a drought cycle, the aging process of our watershed is accelerated. Aging of a watershed means that the living and non-living components will change. An example of change that is in store for our watershed will be new appearances of semi-aquatic emergent vegetation where there was once shallow water. Lower lake levels and retreating shorelines present new habitat for plants that ordinarily would not grow in these areas. Rushes, cattails, wildflowers, sedges – all plants that border our current shoreline will begin their march (or migration) to the newly formed shoreline. The surface area of our lakes, river, and streams will shrink – a logical and obvious result of less water.

Another change will involve the bottom of the deep basins of our lakes. They will begin to accumulate more sediment from the cycle of plants and animals living and dying so that the lakes will someday (usually several thousands of years) disappear into a large wetland and ultimately into a beech/maple forest. Sound bizarre? Perhaps this sounds like our worst nightmare but in fact, history has taught us that this has already happened to countless lakes, rivers, and streams since the last ice age.

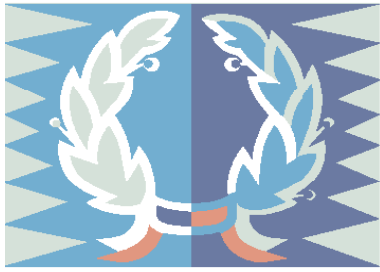
Think it won't happen here? Think again.

In the past two years, a section of a small brook of Hatlem Creek has dried up and disappeared! Hatlem Creek is part of the Glen Lake Watershed.

Through natural succession, our current wetlands will dry up and become uplands and in turn, new wetlands will appear on the fringes of the retreating shoreline. To put all of this in perspective, Big Glen now has a deep basin that is approximately 135 feet but in perhaps 50-100 years, the depth could be only 125 feet or less. All of this hypothesizing is predicated on the basis that drought might continue at the present rate and more shallow shoals will change lake to wetlands. The “open” lakes/river of our present watershed will shrink to a smaller size, shallower lakes and streams one day, many thousands of years from now, will no longer exist.

A quick “knee-jerk” reaction to all of this will put our mindsets into a doomsday mode. We will most likely think and say that this is all terrible and the Glen Lake watershed will never be the same. We tend to put nature's natural progression of succession into our human terms and react with a sense of duty to do something about it. The good news is we can continue to do something about it. We can slow down the aging process of our watershed but we cannot stop it. We already slow down the aging process by limiting the amount of phosphorus that we humans load into the lake. Eliminating lawn fertilization and upgrading failing septic systems will slow down succession. This is how we keep our watershed in good physical condition.

We simply have to get use to the fact that our watershed will change - as slowly or as accelerated as nature will have it. If we continue to be good stewards of the watershed and embrace the natural process of succession as inevitable, then we have to redefine what is “normal”. As with humans and the aging process, we lose our youthful appearance, but with age we gain immeasurably more with added wisdom and inner beauty. I challenge all of us to look for the good that comes from our aging watershed.



First Glen Lake Association Stewardship Awards Announced

Good News! The Glen Lake Association wishes to publicly recognize

- lake-friendly home construction by home owners
- lake- friendly landscaping by homeowners
- lake-friendly protection strategies by local units of government

These *homeowners* have chosen to develop or redevelop their lakeshore or riverfront properties in full compliance with zoning, ordinances, and ecologically sustainable and sensitive principles which enhance the character of the area and the quality of the land and water.

These *local units of government* have created an ordinance, code, or other initiative that officially seeks to preserve the environmental integrity of our lake and river systems.

The Glen Lake Association Stewardship awards committee is pleased to announce its award to the homeowners and units of government that follow.

For Lake-Friendly Home Construction while preserving the environmental integrity of the natural lakeshore or river setting; for Lakescaping, using native vegetation and mostly natural material to landscape in order to protect the shoreline's environmental integrity in a way that can potentially improve water quality:

Mary and Paul Finnegan

Awarded in both categories

*Lake-Friendly Home Construction Award
Lakescaping Award*

Mary and Paul Finnegan's new home was designed by architect John Clive to look like a vintage cottage with care to keep the roofline and footprint as low and small as possible so as not to overwhelm the property. The driveway and parking area are pervious gravel and near the road, away from the house to make the rest of the property more aesthetic and natural looking.

The wetlands on the property were previously filled and the stream put underground. Reclamation of the stream and wetlands were done with DEQ permission, with consultation from Matt Heiman of the Leelanau Conservancy as well as the Milarch Brothers Nursery and Landscaping. Native aquatic plants were used in the stream restoration. Native grasses were allowed to grow and the property was hydroseeded with wildflowers. Some trees were planted around the perimeter of the property as well as native bushes. No phosphate fertilizer, pesticides or herbicides are used anywhere on the property. A natural lake-friendly shoreline and grounds protect water quality as well as enhancing the beauty of this vintage cottage style home.



Mary and Paul Finnegan's vintage cottage style home and restored stream

continued on page 5...

Susan and Vik Theiss

Lakescaping Award

Susan and Vik Theiss' 128 feet of shoreline with many springs, 40 foot wide uplands, and an upslope of 15 feet previously had 40 cedar trees which were cut down, and rocks-stones-gravel and sand added in a failed attempt to create a beach by former owners. Because of this deforestation and filling, nuisance non-native plants filled in the area along with weeds, dotted with cedar stumps. A specialist was hired in wetland restoration, and for the removal of non-natives and to introduce additional native vegetation. Plantings include 100 varieties of bushes, trees, flowers, and beach grass with a total of approximately 5000 plantings.

Paths, sitting areas, a low profile deck and benches allow enjoyment of this beautifully restored area which has attracted a variety of wildlife. An unintended consequence of the entire project has been the emergence of large areas of the rare and endangered yellow Michigan monkey flower.



Susan's and Vik's wetland and shoreland restoration

For a Lake-Friendly Protection Strategy by a local unit of government that has created an ordinance, regulatory code, or other initiative that officially seeks to preserve the environmental integrity of our lake and river systems.

Glen Arbor Township Board and the Empire Township Board

Lake-Friendly Protection Strategy Award

Both the Empire and Glen Arbor Township Boards passed an Aquatic Nuisance Ordinance this year. It is a necessary and forward thinking step in their commitment to prevent the spread of invasive non-native species of aquatic plants, animals and micro-organisms into the lakes, river and streams of our watershed. The ordinance is posted at road ends and the DNR boat launch entrance and reads:

It shall be unlawful for any person to launch any watercraft/trailer or related equipment into any water body in the Glen Lake-Crystal River Watershed in Glen Arbor and/or Empire township unless such watercraft has been washed in such a manner so as to clear it of any aquatic nuisances (invasive, non-native plants or organisms); watercraft/trailer or related equipment which has been out of any water bodies for the ten days immediately preceding such launching do not have to be washed before launching into a township water body so long as any live wells and bilges have been cleaned and water has been blown out of the engine of any such watercraft.

A courtesy watercraft wash station is provided by the Glen Lake Association. It is located at the Day Forest Road DNR boat launch and operates seasonally.

It shall be unlawful for any person to empty any bait box or aquarium into any of the waters in the Glen Lake-Crystal River Watershed within Glen Arbor and Empire Township.

A violation of this ordinance is a municipal civil infraction and any person or firm found responsible for such violation shall be subject to a maximum civil fine of \$500.00 plus costs. Commencing thirty days after receiving notice of a violation, unless said violation is abated, each day the violation continues shall constitute a separate violation of this ordinance.

The Glen Lake Association commends the Finnegan and Theiss Family and the Glen Arbor and Empire Township Boards for the part they are playing in the protection of water quality in the Glen Lake-Crystal River Watershed.

Ongoing awards will be announced, as received and approved, in subsequent newsletters and be recognized at the Glen Lake Association Annual Meeting in August. An application for these awards may be printed from our website, glenlakeassociation.com, as well as the eleven criteria for judging the applications. We encourage homeowners and units of government to submit applications, in other words, to self-nominate.

Glen Lake Association Science Resource Panel Welcomes Two New Members!

The GLA Science Resource Panel is composed of a diverse group of experts educated and experienced in the fields of water quality monitoring, testing procedures, aquatic biology, hydrology and sustainable natural systems. We are extremely fortunate that these professionals have agreed to work with us on the panel. Besides our two new members others on the panel include Dr. Stacy Daniels, Rob Karner, Dr. Jerrine Nichols, Paul Murphy, and Howard Wandell. These individuals give us ongoing advice on a variety of lake, river and stream issues for which we are extremely thankful.

Dr. Roland Drayson

Dr. Drayson has a BSc in mathematics from the University of London, an MS in mathematics from the University of Chicago and a PhD in meteorology from the University of Michigan. He is a Professor Emeritus from the University of Michigan where he taught 14 different courses and chaired doctoral committees from 1963 to 2003 in the Department of Atmospheric, Oceanic and Space Sciences. His research and professional interest include: radiative transfer, molecular spectroscopy, remote sounding of the atmosphere with special interest in the upper atmosphere and ozone chemistry, and global climate change-including its effect in Michigan.

Gary Croskey

Gary Croskey is a Licensed Professional Engineer in the State of Michigan. His professional background and titles include: Supervising Engineer for the Michigan Department of Transportation (MDOT), Environmental Engineer for the Michigan Department of Natural Resources (MDNR), and Hydro Operations Manager for STS Hydropower Limited (STS). He has worked extensively in the specialty areas of Civil Engineering that cover Water Resource Management, Hydrology, and Open Channel Hydraulics.

Gary recently retired from MDOT where he oversaw the Hydraulics, Municipal Utilities, Electrical and Roadside Development design units. When at the MDNR he administered state regulations on dam construction, dam safety and inland lake levels. As the Hydro Operations Manager for STS, his responsibility included the construction, operation and maintenance of four hydroelectric powerhouses and dams in Michigan and Colorado. He has prepared hydroelectric feasibility studies, emergency action plans, dam safety reports, technical reports to the American Society of Civil Engineers, and applications for licensing to the Federal Energy Regulatory Commission.

Gary is currently working as a Dam Safety Consultant. He conducts dam safety and lake level inspections and prepares reports for local units of government, county drain commissioners, and private dam owners.

Both Roland and Gary are Glen Lake Riparians



With all of the rain and recent snow melt, the lake is at 96.85 (01/29/08). The Water Level Committee will continue to attempt to raise the lake throughout the winter. You can track the progress on the GLA web site. The pipe connecting the Mill Pond to Little Glen has been unclogged to restore a needed wetland and spawning area for pike. The mill pond also serves as a habitat for swans, geese, and ducks and many minor flora and fauna. The level of the water in the Mill Pond has a miniscule effect on the water level of the lake.

The Glen Lake Association would like to develop an email list of their members so that occasionally we can communicate critical issues to you rather than having to wait until the next newsletter comes out. There is a place on your membership dues envelope within the permanent address block to indicate your email so we can enter it into our data base. An example of two issues we might communicate to you about are road end legislation and microcystis blooms in the lakes. Presently we have only about one third of our member's emails.

You may be interested in checking out these web sites from Dale VanHouzen

nwmichigan.com/glenlakebridge/

nwmichigan.com/dfgc

2007 Membership Contributions

The following listing comprises those who made membership contributions in 2007 to support our annual programs. Many of these contributors gave far more than the \$50 minimum required for membership benefits.

Family Sustaining (\$500 +)

Berlacher, Bob & Julie
Campbell, Brian & Mary
Fehrmann, Robert & Barbara
Finnegan, Paul & Mary
Gordon, Daniel & Marguerite
Hagerty, Louise
Haley, Jane
Hamilton, Jeff & Diane
Oleson, Carl & Jackie
Pierce, Dennis & Martha
Shook, James & Jan
Skogsbergh, Jim & Diana

Sustaining (\$250 +)

Anderson, William & Vicki
Bates, Chapin C.
Bates, Lee & Violet
Binsfeld, John. & Connie
Bohmer, David & Lynn
Brady, Donald. & Geraldine
Cutler, Barry & Renie
Dean, William & Doreen
Dean, Howard & Diane
Dutmers, Tom & Monica
Dutmers, Patricia
Dutmers, James & Susan
Foster, Thomas.
Foust, Frederick & Joyce
Frank, Halbert & Suzanne
Weese
Gordon, David & Penelope
Hackett, John. & Ann
Hanson, David. & Nancy
Hayes, David & Virginia
Herr, David & Maureen
Heslop, James & Marcia
Hoagland, Nancy
Hoagland, John & Shirley
Hoagland, John & Carolyn
Humphreys, Gary & Sharon
Hurbis, Charles & Irene
Johnson, Jeffrey
Joutras, Richard & Meta
Killen, Calvin & Nancy
Knight, Lester. & Becky
Kostrevagh, C. Andrew & Carolyn
Lanphier, Robert. & Jeanne
Martin, Van & Sharon
McNally, Michael & Margaret
Miller, Patrick & Deborah
Nichols, Ronald & Elayne
Otto, Jack
Prins, Merle & Arnola
Riegel, Al & Kay
Rockwood, John & Virginia
Selkoe, Dennis & Polly
Sherman, Jack & Ann
Shugart, Duane & Chris
Sprouse, Joanne
Stead, Robert & Petra
Theiss, Viktor & Susan

Tubergen, Jerry & Marcy
Walton, Jack
Windemuller, Mark & Carol

Family Contributor (\$250 - \$499)

Alton, Bruce & Christie
Bloom, Robert & Felicia
Chormann, Richard & Carolyn
Coleman, Carl & Judith
Drayson, Roland & Diane
Duff, James & Beverly
Duff, Mark & Kristin
Dutmers, Chad & Macaire
Fetzer, Sally
Gillula, Bill & Patricia
Hill, Douglas & Helen
Krawczak, Laurence & Anne
McArthur, Brad & Leah
Meserve, William & Susanne
Unger, Timothy. & Susan
Whipple, Kenneth & Kimberly
Wierenga, Don
Worsley, Donald & Carol

Contributor

(\$100 - \$249)

Anderson, Peter & Karen
Andrews, Charles & Delphine
Baldwin, David & Dawn
Bartlett, Janice
Bauer, Roger & Jan
Becker, James & Lynn
Becker, Dennis & Carole
Bellows, Randall & Jeffrey
Anne
Bender, Thomas & Joanne
Bertolacini, Ralph & Dorothy
Besio, Gregory & Sue
Betzig, Susan
Binstadt, David & Chari
Boles, Robert
Boucher, Henri & Beatrice
Carbeck, Robert & Mary Alice
Cassard, David & Cara
Christensen, Chris & Sandy
Clark, Stephanie
Cook, Stanton
Cornillie, Joseph & Anne
Cutler, William & Carol
Czerniawski, Ben & Kathy
DeConinck, Timothy & Biruta
DeFaria, Carl & Polly
Dennos, Mary Christine &
Depuy, John & Pam
DeWitt, Stephan & Mary
Dotterweich, William & Peggy
DuPont, Andra & Olivia
Dykstra, James & Ann
Fairfield, Jack & Doris
Fetzer, Wade & Bev
Fowler, Timothy & Laurinda
Frixen, Eb & Mary
Geisler, David & Sharon

Gelter, Paul & Teresa
Giegerich, William. & Sally
Giegerich, William & Sally
Giffin, Gerald & Ellie
Greenway, Guerdon
Haley, Peter & Barbara
Heider, Hollie
Heinhuis, William & Patricia
Herendeen, Tom & Sue
Hoenecke, Gretchen
Holt, David & Gloria
Howes, Paul & Cynthia
Iuppenlatz, Mark & Lori
Johnson, Stanley & Gaye
Kay, Richard & Barbara
Kelley, Dean & Kelly
Keuning, Jay & Cheryl
Kint, Paul & Dorita
Klingaman, Thomas & Marilyn
Kramps, Herb
Kryder, George
Leiser, David & Dawn
LeJeune, Dennis
Lichliter, Bruce & Anne
Lora, Michael & Pat
Lorenz, John & Elizabeth
Lott, Bill & Karen
Lubig, Frederick & Kathleen
Lund, John & Carol
Marshall, David & Christy
Marszalek, Leonard & Anne
Martin, William & Nan
Martlew, Jeffrey & Ginny
McCormick, John & Josephine
McLaughlin, Lana
Meyers, Ann
Miller, Keith & Elaine
Mize, Larry & Lisa
Morley, Jay & Mary
Murray, Michael & Doris
Neff, Ruth
Nugent, George & Marilyn
Olson, Burt & Virginia
Peer, Gerald & Janice
Pentilla, Roy & Elaine
Peterson, Gerald & Mary
Powley, Gerald & June
Ricker/Cacossa,
Rinker, Marilyn
Robinson, Charles & Libby
Rockwood, Bill & Donna
Rodman, Tom & Mary
Ryzenga, Wallace & Dolores
Sander, Barbara
Schaap, Daniel & Linda
Schiff, Donna
Schilling, Richard & Barbara
Seward, Richard & Linda
Silvasi, Daniel & Linda
Smith, Larry & Ruth
Smith, Ernest & Dana
Smith, Louis & Karen
Snell, Robert & Sharon
Steiner, Frederick & Sarah
Suhajda, Greg & Janice

Sullivan Shook, Sara
Valenti, Joseph & Karen
VanRaalte, Howard & Ellen
Vetter, John & Patricia
Wadsworth, Jon
Wallace, Ryzenga
Warburton, Harvey & Marilyn
Westbay, Tim & Jacki
Yanover, Jennifer
Yoakam, Juanita
Zerrenner, Karen

Full Business Member (\$250+)

Dorsey's on Glen Lake
Glen Craft Marina
Glen Craft Villas,
The Martin Company
Picard Appraisal

Family Basic (\$125 - \$249)

Backus, Joseph & Barbara
Bahr, Richard & Shirley
Beam Family
Braly, Harold & Barbara
Carley, Chris & Nancy
Chesterfield, David & Linda
Conroy, Jerry & Kathy
Cook, Albert & Jane
Cozzens, Bruce & Kathryn
Creten, Ronald & Peggy
Darlington, Albert & Ellen
DeKorne, Jack & Betsy
Doepke, William & Ms. Barbara
Cochran
Doran, David & Maureen
Doyle, James & Sharon
Drake, Robert & Jane
Falahee, Mark & Karen
Glettler, Bernard & Laura
Good, Martin
Graber, Jon & Gloria
Haley, Jamie Goodell
Hampton, William & Lanie
Anderson
Haynes, James & Helen Ann
Johnson, George & Gail
Johnson, Richard & Suzanne
Kemler, James & Paula
Kremin, Jeffrey & Becky
Leahy, Timothy & Margaret
Litch, Ernest & Sarah
McElrath, Randall & Margaret
Meaden Family
Mittelberger, Ralph & Harriett
Novak, Robert & Mary Jane
Ofenloch, Charles & Sara
Powell, George
Query, Jim & Mason
Ricker, Edwin & I. Elaine
Schalhamer, Melvin & Gayle
Sheets, Donald
Spaeth, Jeffrey & Jenny

Membership, continued ...

Stewart, Daniel & Vicki
Stoner, Richard & Marjorie
Tramitz, Melvin & Sally
Ware, James & Elizabeth
Wille, Tom & Sally
Witler, William & Rita

Basic (\$50 - \$99)

Adler, Barry & Lynn
Alix, Jay
Allman, John & Lorrie
Andersen, Richard & Holly
Andres, James & Connie
Antle, Richard & Joan
Ashbury, Margaret
Augenstein, David & Kathy
Bagby, J. Sumner & Irene
Bahr, David
Banish, William & Rosemary
Barker, John & Dorothy
Barker, William & Donna
Barnell, Charles & Kay
Barrett, Marge
Barry, Patrick & Cheryl
Batterson, William & Nancy.
Baxter, William & Gwen
Bierkamp, Walter & Roberta
Binsfeld, Michael & Melinda
Blos, Peter & Joan
Bodnar, Patricia
Boyer, James
Bratt, Marilyn
Bricker, Ben & Ananda
Bricker, Bruce & Cindy
Brown, Calvin & JoAnn
Buck, James & Kitty
Budinger, Richard & Gay
Bulliss, George & Patricia
Burke, Michael & Caryl
Burton, Peter & Sandi
Cady, Chuck & Susan
Caesar, Martha
Call, Patrick & Pamela
Carels, Henry & Amy
Castle, Jean
Chen, Kelvin & Carol
Chormann, Jim
Clark, Joy Webb
Clark, Mark & Carol
Coalson, Glen & Kimberly
Cobb, Horace & Jane
Coffer, F. Joe & Barbara
Coghlin, John & Diane
Colbath, Richard
Colby, Donald & Joan
Collins, John & Katherine
Cook, Marian
Cook, Robert & Katie
Cook, Robert & Naomi
Cook, Webster
Craig, Richard & Robin
Croskey, Gary & Hope
Crowe, Elizabeth
Crumbaker, Robert & Carol
Cutler, Jeff & Tamara
Daly, Yvonne
Darlington, Edward & Marian
Davey, John & Ann
Davis, Thomas & Phyllis

De Meester, Lee & Maribeth
Dean, Jeanine
Deerhake, Richard & Barbara
DeGraff, Avel
DeJager, Dale & Meg
DeVirgilio, Mark & Susan
Dietzel, Robert & Lucille
Dixon, Jeffrey & Mary
Dorsey, James & Velma
Dorsey, John & Alberta
Dotterweich, Andrew & Maria
Draheim, Erwin & Dorothy
Drayson, Kathleen
Dunn, Edwin & Kathleen
Durkee, Norma
Dutmers, Tim & Jen
Edick, George & Nancy
Egan, Thomas & Rosemary
Eichstadt, John & Sharon
Erdmann, Tom & Juli
Faulman, Ellsworth & Lucille
Faulstich, George & Anne
Faulstich, Kendall & Sarah
Fay, Mary
Fenton, A. Grace & Christian
Finke, Ruth Lovingood
Fisher, Jay & Shirley
Flerlage, Freda
Ford, Fred & Karen
Fornowski, Ronald & Charlotte
Foust, Brian & Cathy
Fowler, James & Barbara
Francis, Lynn & Alice
Freeman, William & Janice
Gass, Margaret
Gergosian, Edward
Getchell, Bud & Aline
Glennon, Richard & Mary
Goris, Glenn
Gougler, Susan
Gravelie, Scott & Ellen
Green, Richard & Linda
Greener, Francis
Gretzema, Terry & Linda
Hale, Donald & Charleen
Halik, Greg & Carol
Harriger, Donald & Joan
Hasselbeck, Michael & Candy
Henry, Dick & Lois
Heston, William & Janet
Hodge, Jerome & Beatrice
Hoezee, Edward & Virginia
Houghton, Matthew & Barbara
Housman, Bart & Fran
Hughes, Kay
Husted, Stanley & Clara
Hutchison, Douglas
Ireland, Diana
Jacobs, Bruce & Judith
Jencka, Christopher & Janice
Jennings, R.D. & Vivienne
Johnson, Gary & Christine
Johnson, Harvey & Amy
Johnson, Jay & Betsy
Jones, Bob
Kamps, Dick & Lynn
Kaneaster, James & Sue
Karner, Rob & Barbara
Kassarjian, John & Carolyn

Kelly, John & Esther
Kelly, Kent & Carol
Kieft, Garry & Francine
Knuff, Richard & Mary Ann
Komendera, David & Gail
Laitala, Jack & Hope
Lake, Joseph & Sue
Langhorst, Martin & Marsha
Lattimore, Scott & Julie
Lavery, Robert
Lech, Ronald
Leep, Alice
Lewis, Donald & Annette
Listecki, Robert & Kristin
Logan, Michael & Caryl
Lubig, Mike
Lundwall, Phillip & Diane
Mackey, Ann Carr
Marth, Robert & Janet
Mathes, Joseph & Lorraine
Mathiesen, William & Jean
Matschke, Donald
McBride, Carl & Judy
McCally, A. Ward
McKane, Daniel & Barbara
McNeil, Malcolm & Mary Helen
McRae, Robert & Irene
McShane, Steve & Kathy
McWatt, George
Meyer, Robert & Judith
Miller, John & Judy
Miller, Margaret
Miller, Nathalene
Momeyer, John & Gloria
Morawski, Gerald & Deborah
Mulder, Roger & Beverly
Murphy, Edward
Nielsen, Stephen
Nightingale, Gloria
Nuzum, C. Thomas & Jean
Ofenloch, John & Tiffany
Olson, George & Jonelynn
Paczas, Eleanor
Papke, Suzanne
Parker, James & Norma
Patton, Charles
Payne, Harvey & Doris
Peirce, William
Pelham, Matt & Kathy
Peppler, Janet
Peppler, John
Perrone, Lorena
Peterson, Ted & Amy
Petrock, Frank & Nelly
Pfeifer, Frank & Marie
Phillips, Everett & Nancy
Picard, Peter
Polman, Paul & Kim
Potter, Marian
Puzzuoli, Joseph & Kathryn
Quarderer, George & Carol
Raines Family
Rank, Lawrence & Marilyn
Reay, Tom & Holly
Reich, Mary
Reyes, Jill
Rhoades, Betty
Rice, Lois Andrews
Riday, John & Barrie Dillon

Riegler, Donald & Lori Hansen
Riga, Scott & Terry
Roberts, Kathleen
Roman, Lance & Dana
Rosensteel, Richard & Naomi
Rosiek, Joseph & Cynthia
Schloop, Clinton & Joan
Secontine, Robert & Marge
Seeburger, William
Selby, Ben & Carolyn
Sexton, Marie
Shulman, Bennett & Judith
Siekper, Frank & Barbara
Siekper, Frank & Teresa
Sills, John & Marlene
Smith, Dean & Mildred
Smith, Donald & Helen
Smith, Garth & Judy
Smith, Richard & Patricia
Soderholm, John & Karen
Spencer, W. Boyd & Cathy
Spring, John & Sita
St. Clair, Charles & Jeanette
Stege, Bill & Cherrie
Stenback, George
Stewart, Edward & Paula
Stewart, John & Antoinette
Stock, Elwood & Shirley
Stockman, David & Joyce
Stoessel, Bob & Jean
Strong, Truman & Elizabeth
Stryker, Harry & Faith
Stuart, John & Kathleen
Suciu, Spiridon & Jean
Sutherland, Irvin & Ann
Swierad, Theodore & Lois
Taylor, Joy
Thoburn, Paul & Jane
Thomasma, Tom & Michele
Timmis, Gerald & Dorothy
Totten, Jeffrey & Phyllis
Trim, Roger & Elizabeth
Turner, Edward & Maureen
Ulisse, Edward & Sandra
Upchurch, Jane
Van Houzen, Dale & Mae
Van Houzen, Martin & Harriet
Van Nort, Peter & Karen
Verburg, Robert & Carol
Wagner, Mark & Linda
Walder, Tom & Nancy
Watt, David & Becky Thatcher
Watt
Weaver, Elizabeth
Webb, Gilbert & Betsy
Webb, Jill
Weinheimer, Allan & Jean
Wiater, Jerome & Michele
Wiesen, Kathleen
Wilce, Steve & Devvon Lynn
Wilcox, Frank & Elaine
Wilcox, Merle & Kay
Windich, Robert
Wingerter, Pamela
Witler, Elva
Wolbrink, Paul & Vivian
Yates, Thomas
Zelle, Lee & Chris
Zuckerman, Leonard & Kay

2007 Preservation or Endowment Contributions and Pledges

The Glen Lake Preservation Fund successfully completed its initial campaign to raise \$1 million during 2006. In 2007 the Association's Board of Directors approved the transfer of the remaining assets of the Preservation Fund into the Endowment Fund and the General Fund. Listed below are those who have given to date to either the Preservation or Endowment Fund. Those who made their initial contribution to the Preservation or Endowment Fund during 2007 are recognized with an asterisk.

Contributions and Pledges

Adler, Barry & Lynn
Allemang Family
Alton, Bruce & Christine
Anderson, Peter & Karen
Anderson, William & Vicki
Andrews, Charles & Delphine *
Anonymous
Ashmun, Bob & Krista
Bates, Lee & Vi *
Becker, Dennis & Carole
Berlacher, Robert & Julie
Binsfeld, John & Connie
Binsfeld, Michael & Melinda
Binstadt, David & Chari
Bloom, Robert & Felicia
Braly, Harold & Barbara
Brammer, Lawrence & Beverly
Brookhaven, Ltd
Campbell, Brian & Mary
Call, Patrick & Pamela *
Cassard, David & Cara
Chormann, Richard & Carolyn
Christensen, Chris & Sandra
Coleman, Carl & Judy
Cook, Webster & Lois *
Cutler, William & Carol
Davis, A David & Tracy
Dean, Howard & Diane
Dean, Jeanine *
Dean, William & Doreen
DeGraff, Avel B.
Dotterweich, William & Peggy
Duff, James & Beverly
Dunn, Edwin & Kathleen
Dupont, Andra & Olivia
Dutmers, Chad & Macaire
Dutmers, James & Susan
Dutmers, Thomas & Monica
Dykstra, James & Ann
Egge, Randall & Elizabeth *
Fehrmann, Robert & Barbara
Fetzer III, Wade & Beverly
Finnegan, Paul & Mary
Ford, Fred & Karen *
Foster, Thomas & Steven
Foust, Frederick & Joyce
Fowler, Timothy & Laurinda *
Freeman, William & Janice
Gergosian, Edward *
Gelter, Paul & Teresa
Gillula, William & Patricia
Good, James & Antoinette

Gordon, Daniel & Magee
Gordon, David & Penelope
Gravelie, Scott & Ellen *
Groos, Margaret *
Hackett, John & Ann *
Hagerty Classic Marine Insurance Agency
Hagerty Insurance Agency, Inc.
Haley, Gilbert & Jamie
Haley, John & Carrie
Haley, Louis & Jane
Haley, Jane *
Haley, Peter
Haley, Susan *
Hamilton, Jeff & Diane
Haughn, David & Susan
Herendeen, Thomas & Sue
Herr, David & Maureen
Hoagland, John & Carolyn
Hoagland, John T and Shirley
Hoagland, Nancy
Howes, Paul & Cynthia
Hughes, Brent & Kay
Humphreys, Gary & Sharon
Jacobs, Bruce & Judith
Johnson, George & Gail *
Johnson, Jeff *
Johnson, Richard
Johnson, Stanley & Gaye
Joutras, Richard & Meta
Kamps, Dick & Lynn
Karner, Robert & Barbara
Kelley, Dean & Kelly
Klingaman, Thomas & Marilyn
Kostrevagh, Andrew & Kay
Lake, Joe & Sue
Lanphier, Robert & Jeanne
Litch, Michael & Sarah
Longyear, Marian *
Lora, Pat & Mike *
Lorenz, John & Elizabeth *
Lovingood, Ruth Fink
Lubig, Frederick M & Kathleen
Lund, John & Carol
Martin, Van & Sharon *
Martin, William & Nan
McArthur, Bradley & Leah
McCally III, A. Ward
McElrath, Randy & Peg *
McNally, Michael & Margaret
McShane, Stephen & Kathleen
Meaden, John & Mary *
Meserve, William & Susanne
Meyers, Ann *
Miller, Keith & Elaine

Miller, Patrick & Deborah
Molten Family
Molten, Donald & Patty *
Moore, Robert & Annabelle
Murray, Michael & Doris *
Nichols, Ronald & Elayne
Novak, Robert & Mary J.
Ofenloch, Charles & Sara
Oleson III, Carl & Jackie
Otto, Jack
Papke, Suzanne
Peppler, John
Peppler, Linda
Perrone, Lorena
Pierce, Dennis
Peirce, William *
Prins, Merle & Amola
Pentilla, Roy & Elaine *
Peppler, John
Quarderer, George & Carol
Reyes, Jill *
Rhoades, Betty *
Riegel, John & Kay
Rinker, George & Marilyn
Rockwood, John & Virginia
Rose, James & Marcia
Rosensteel, Richard & Naomi
Schilling, Richard & Barbara
Secontine, Robert & Marge
Selkoe, Dennis & Polly *
Shook, James & Jan *
Shugart, Duane & Chris
Skogsbergh, Jim & Diana *
Sills, John & Marlene *
Smith, Ernest & Dana
Smith, Ernie & Kay *
Smith, Louis & Karen
Smith, Richard & Pat
Sprouse, Joanne
Steiner, Frederick
Stewart, John & Antoinette
Suhajda, Gregory & Janice
Trentacosta, John & Dawn
Trulaske, Jr., Robert
Tubergen, Jerry & Marcia
Turner, Edward & Maureen
Unger, Timothy & Susan
Upchurch, Jane *
Versluis Cottages
Weaver, Mary E & Douglas E
Whipple, Kenneth & Kimberly
White Family Partnership *
Wierenga, Donald & Betsy
Westman
Wiesen, Kathleen

Wilcox, Merle & Kay
Witler Jr., William & Rita
Worsley, Donald & Carol

Memorials

In Memory of Andy Anderson

Bruce & Christie Alton
Richard Bannister
Harold & Barbara Braly
Wright Bronson, Jr.
Richard & Dorothy Chenoweth
Susan Cohen
James & Susan Dutmers
Patricia Dutmers
Thomas & Monica Dutmers
Halbert Frank
Paul Frank Jr.
John & Barbara Gillen
John & Ann Hackett
John & Carrie Coker Haley
Donald & Ann Heslop
Mrs. George Kryder Jr.
Bruce & Ann Lichliter
Mike & Patricia Lora
Charles & Sara Ofenloch
Jack Otto
Charlie Patton
Rob & Pat Rose
George & Barbara Schilling
Robert & Arden Schlueter
Joanne Sprouse

In Memory of Barbara Pierce

Frederick Adams, Jr.
Linda Albertzart
Stephanie Balinski
Mr. and Mrs. John Ballantyne
John & Dorothy Barker
Mary Beth Bolton
Christine Brodenweck
Grace Bull
John & Mary Helen Bull
Carolyn Butters-Jenkins
William & Carol Cutler
Four Seasons Condominium Assoc.
James & Lois Gamble
Richard & Nancy Halsted

Memorials, honorariums, grants continued ...

Les Jardinières Garden Club
(Pat Haupt)
Ronald Jenkins
Richard & Suzanne Johnson
David & Dawn Leiser
Robert & Joyce McConnell
Jack Otto
Donald & Elsie Overy
Francine Parker
Kathryn Polansky
Howard & Mary Louise Pridmore
Deric & Pamela Righter
Elsie Righter
Patricia Riker
A.J. & Mary Ann Rosborough
Earl & Joan Ross
Bob and Marge Secontine
Cecil Sharpe, Jr.
Mr. and Mrs. Ben Smith
Ben Snyder
Robert & Patricia Stoner
Karen Street
Mr. and Mrs. A. Rowland Todd
Kenneth & Phyllis Urwiller
Nuno & Maria Joao Vaz
M. Richard & Suzanne Wickham
Elizabeth Williams
Benson & Mary Woo
Lowell & Julia Youngquist

**In Memory of
Don Colby**

Richard & Barbara Deerhake
Margaret Miller
Anonymous (4)

**In Memory of
Sally Jo Coleman**
Carl & Judeth Coleman

**In Memory of
Kenneth Darlington**
Al and Ellen Darlington

**In Memory of
Gracie Dutmers**
Thomas & Marilyn Klingaman

**In Memory of Fred and
Jessie Dykstra**
Jim and Ann Dykstra

**In Memory of
Barney Glettler**
Joseph & Sue Lake

**In Memory of
James Hurd**
Patricia. Dutmers

**In Memory of
Jeanne C. Lanphier**
Robert Lanphier

**In Memory of William
and Helen Peppler**
John Peppler

**In Memory of
Mary Leigh Roach**
Charlie Patton

**In Memory of
Ruth Roelofs**
Kathleen Roberts

**In Memory of
Joy Unger**
Tim and Sue Unger

**In Memory of
Gilbert Warnes**
Jack Otto
Joanne Sprouse

Honorariums

**In Honor of
Jacob & Tillie Versluis**
Bob & Bonnie Versluis
David and Cara Cassard

**In Honor of the marriage
of Christopher and Mova
Huffman**
Roland & Diane Drayson

**In Honor of
Fred and Joyce Foust**
Brian and Kathy Foust

**In Honor of
Cora S. Heidel**
Michael and Monika Heidel

**In Honor of
granddaughter's birth,
Lillian Gordon Hethcote
Ricker/Cacoss wedding
Margaret Gass's birthday**
Charlie Patton

**In Honor of
Thomas Hoatlin**
Douglas and Beth Reid



Our beautiful Crystal River - Winter 2008

Survey from the Long-Range Planning Committee

The Long-Range Planning Committee and the Association's Board have developed a set of goals and actions that should help protect the beauty and water quality of Glen Lake and the surrounding area. The report of the Committee was distributed at the Annual Meeting and is also available through the Association's website at glenlakeassociation.com. Many of the initiatives described in the plan such as septic system inspections and restrictions on the clear cutting of trees on hills around the lake require actions by the townships and the county. The results of these steps could take years to achieve but we hope you agree it is worth the effort.

In the development of the plan, we tried to get as much input as possible from members of the Association, but not everyone was able to contribute their thoughts. Your responses to the brief questions below will be very useful to our Committee to ensure that we have identified and considered all issues that the membership deems important:

1. What are the one or two issues that most concern you about Glen Lake and its development over the next five to ten years?
2. Could you suggest any specific actions that the Association could take to address your concerns?
3. What is the single most important quality about Glen Lake and the surrounding area that you want preserved for future generations?

Please mail your response to each of these questions to the Glen Lake Association Long Range Planning Committee. Thank you for your assistance. We will make any modifications to our plan that may be required based on your comments. Any revisions will be posted to our website and in the newsletter.

Glen Lake Association
Long Range Planning Committee
P.O. Box 245
Glen Arbor, MI 49636



P.O. Box 245
Glen Arbor, MI 49636

Glen Lake Association Winter 2008

GLEN LAKE ASSOCIATION

2007-2008

BOARD OF DIRECTORS

OFFICERS

Sarah Litch
John Rockwood
Patricia Smith
Joan Kramps
Gary Humphreys

President
Vice President
Secretary
Recording Secretary
Treasurer

DIRECTORS

Felicia Bloom
Andy DuPont
Jack Laitala
Carl Oleson
Shirley Hoagland
Charles Ofenloch
Matt Wiesen

Watershed Biologist

Rob Karner

COMMITTEE CHAIRS

Auxiliary
Development

Finance & Investment
Historian
Invasive Species
Long Term Planning
Membership & Records
Nominating
Public Relations
Swimmer's Itch
Water Level
Water Quality
Fisheries, Wildlife, Recreation
and Water Safety
Web Site
Newsletter

Felicia Bloom
Charles Ofenloch,
John Pepler
Gary Humphreys
Joan Kramps
Denny Becker
John Rockwood
Mike Litch
James Dutmers
Pat Smith
Rob Karner
Jack Laitala
Sarah Litch
Carl Oleson

Jack Laitala
Dale Van Houzen,
Sarah Litch
Sue & Bill Meserve

GLEN LAKE ASSOCIATION OFFICE

P.O. Box 245
Glen Arbor, MI 49636
Fax (after 2 rings)

231-334-7645

231-334-7470

GLEN LAKE ASSOCIATION WEB SITE

www.glenlakeassociation.com