

# Glen Lake Association Alligator & Inspiration

*Glen Lake: Yesterday, Today and Tomorrow*

## **G**len Lake Named Top Lake Association in Michigan

For its educational outreach and other creative efforts to ensure the health of Glen Lake for future generations, the Glen Lake Association received the prestigious Michigan Inland Lake Steward of the Year Award.

The Michigan Lake and Stream Associations' top state honor for 2008 was presented at the group's 47th annual conference in Grayling and was received by then GLA President Sarah Litch.

"The Glen Lake Association is head and shoulders above other nonprofit lake associations in the state," observed Scott Brown, assistant MLSA executive director. "Glen Lake Association sets the bar. A lot of lake associations don't do much – just pontoon parades on the Fourth of July and an annual potluck. We look at GLA as the association that sets the pace for leadership and our most important challenge – education."

Accepting the stewardship plaque on behalf of GLA, Sarah commented that "The association board, the staff and our dedicated volunteers have worked long and hard on behalf of this irreplaceable resource and we are proud to be the 2008 recipient of the award. Educating riparians and the community about this delicate watershed is paramount to its health and its future for generations to come. We need everyone's continued help and involvement."



This marks the second year that the MLSA, which represents about a third of the thousands of lake associations in the state, has bestowed the award. Director Brown noted that unlike the GLA, less than one percent of the state's lake groups employ a lake biologist or offer a boat launch wash inspection program aimed at prohibiting invasive species.

Other programs funded by member dues and contributions include:

- Joint creation of a Glen Lake-Crystal River Watershed Management Plan.
- Yearly invasive plant surveys of Big and Little Glen, Big and Little Fisher.
- Establishment of a Fish-Wildlife-Recreation Committee by the GLA board.
- Duck capture, inoculation and relocation program to control Swimmer's Itch.



*The Glen Lake Association, Inc. is a non-profit organization dedicated to the protection, preservation and continued improvement of the beautiful Glen Lake area.*

**Fall 2008**

A Message from the President	2
Karner's Korner	3
New Website Announcement	4
Is Boat Spraying Necessary?	5
Membership	6,7

# A Message from Our President

It has been a privilege to serve as your president since the Annual Meeting in August. I appreciate that opportunity and your support.

As highlighted in this newsletter and as previously announced, the Glen Lake Association has been recognized by Michigan Lake and Stream as the best lake association in Michigan. This was due to the leadership of Sarah Litch and the presidents before her as well as the hundreds of volunteers who give generously of their time to serve on our Board, on our committees or help staff one of our many projects. Together with the Association's Board, I will do my best to carry on the important work of our organization to protect and improve the Glen Lake/Crystal River Watershed.

In a survey of our membership earlier this year, the most common concern was maintaining the high level of water quality. This factor, together with the natural beauty of the area, have made the Glen Lake area one of the most desirable areas in the Midwest to live, vacation or visit - with commensurately high property values. Some of you mentioned in the survey your desire to ensure that you could pass on to your children and future generations the beauty and special times you enjoyed here - many of us can claim an association with Glen Lake over four or more generations. But regardless of each of our motivations, we all have a stake in protecting the area's future and addressing issues that may threaten its beauty and quality of life.

Over the past ten years, the Glen Lake Association has initiated several new programs to protect our water quality and help ensure the related swimming and boating opportunities that Glen Lake, the Fisher Lakes and Crystal River offer. These include:

- The boat washing program to prohibit or limit invasive species that might be introduced into Glen Lake by boaters. As you may know, invasive species introduced into some other lakes in Michigan have not only presented significant water quality problems but also entailed major expenditures to treat or partially eradicate.

- Increased water testing around the lakes with a current focus on working on pollutants found in water entering Glen Lake through Hatlem Creek.
- Faulty septic systems have also been identified as impacting our water quality. We continue to work with owners to upgrade their septic systems and applaud the homeowners in Harbor Island for initiating and constructing a new septic system, despite cost and construction complexities.
- Growing up on Glen Lake during summers, swimmer's itch is as elusive a problem today as it was then. As you know, we have hired nationally recognized experts to help us with this issue since it impacts the enjoyment of the lakes by many families. Some new approaches may now be available that were briefly discussed at the annual meeting and will be outlined in more detail later on our website or in subsequent newsletters.

While the Association is involved in many other issues, programs to protect our water quality represent the largest portion of our budget.

These and other programs of the Association impact all lake owners (riparians) as well as area land owners. Currently, approximately one third of riparians are not members of our Association yet benefit from its work. To maintain the most important programs we have in place, we will need to increase our membership by 25% over the next three years to avoid significant dues increases or program cuts.

We have taken some initial steps this year but plan an organized "neighbor to neighbor" campaign to begin next spring. The Membership Committee will be detailing a program to accomplish this goal and I hope you will consider participating. More details will follow in our Winter newsletter and on our website.

Thank you again for your support of our Association and I hope you are having a wonderful and healthy Fall.

John Rockwood  
President



## New News from the Watershed Biologist

For over 25 years, we have conducted our annual Cladophora survey and it's purpose was to pinpoint locations of algal growth that might indicate abnormal "pollution" or nutrient loading of phosphorous that degrades water quality. This fall, for the first time in the history of the Glen Lake Association, the water quality committee will be embarking upon a similar, more expanded project that will take inventory of our shoreline in a more comprehensive way for the purpose of "**benchmarking**" the greenbelts and sites of erosion. The results of the survey will be shared to all members of the association in a statistical format. Individual "scores of lake friendliness" will only be shared upon request of the riparian wishing to know how they scored for their shoreline property.

With respect to Ecoli and Hatlem Creek, we started sampling the mouth of the creek on several occasions this summer only to find that after significant rain events (when the creek water turns brown) that Ecoli counts are above "safe" levels. The county health department has agreed to perform a creek-long survey to pinpoint the possible causes of Ecoli from human seepage. Once Glen Lake Association has made a second and confirming test via **DNA testing** that the human version of Ecoli is indeed in the Ecoli mix, the health department has committed to begin their study and if they find the source of human seepage in the creek, will take action within the law to correct the problem.

Our fight to reduce **swimmer's itch** continues. However, for the first time in the history of battling swimmer's itch, we are offering a new program that may help reduce swimmer's further by using a "hot spot" treatment method designed by SiCon, Inc. Despite our efforts to reduce swimmer's itch by live trapping and relocating the common merganser duck, we need to also focus on a single



target snail species. Therefore SiCon, Inc. is offering a hot spot treatment for a specified section of shoal/shoreline that mechanically removes the target snail. The program is experimental and may have mixed results. Individual riparians will contract directly with SiCon, Inc. and pay for the program. If your interested, please contact me and I will help get you started. Also, if you have interest in helping us with a spring program to keep migrating common mergansers off the lake, please let me know. We could use your help!

As many of you know, Leelanau County failed to pass a county wide septic inspection ordinance. It has failed twice in the last several years. For the first time in the recent history of Leelanau County, Bob Hawley, Chair of Leelanau County Commissioners,

and I have initiated with the county a multi-dimensional water quality task force that involves over 15 agencies and organizations that will help forge new water quality initiatives that will help protect our water quality on Glen Lake and beyond into the entire county. Thanks to Bob Hawley, John Rockwood, your GLA President, and the help of the **water quality task force**, we will introduce in October, a water quality resolution that if passed, will pave the way for future programs, ordinances, and funding that will help us protect our watersheds from unnecessary pollution and degradation.

In closing, if you would like to **set up an appointment** for me to come to your home and discuss your current land-use practices and have me make an evaluation of how well you are contributing to water quality, please contact me. In the past four years, I have made over 60 home visits and each one has been enjoyable and productive.

Have a great fall!

Rob Karner  
231/334-5831

[rkarner@leelanau.org](mailto:rkarner@leelanau.org)

# GLA News Now Available Year-Round

~ New Website is Launched ~



An aerial photograph from 5,000 feet or a panoramic view from Inspiration Point, the feeling's the same: there's no place quite like Glen Lake.

These images and much more fill the pages of the new Glen Lake Association website -[www.glenlakeassociation.org](http://www.glenlakeassociation.org).

Whether checking the latest water level reading, the weather, or learning more about what's happening on the lake, the website redesign offers crisp, clean and easy-to-read information. It also will keep Glen Lakers and the community apprised of events, water quality issues, feature stories on area residents and provide information on ways to support the important work of the association.

Webmaster Shirley Hoagland, who along with Jack Laitala, are GLA directors as well as constructors of the new website. They were inspired in their efforts by suggestions from GLA members and volunteers.

The two directors view the site as the Glen Lake Association's electronic newspaper. "It's an important communication tool and information resource for riparians in the Glen Lake/Crystal River Watershed, as well as the entire community," explains Jack, who also designed the original GLA website. "Our goal is to provide information about the lake; air issues of concern to lake and riverfront property owners; and be a channel for topics of interest." In addition, links to other topical regional sites are listed.

Visit the new website at [www.glenlakeassociation.org](http://www.glenlakeassociation.org); or call 231.334.7645.

.....

**The website will be updated frequently with news of interest such as the construction of the 'narrows' bridge and other pertinent information concerning our lake and surrounding area, plus feature articles visiting the past through interviews of long-time lake residents along with historical pictures.**

**If you would like to receive an email letting you know when new items are posted on the website, please send your email address to [glenlakeassociation@gmail.com](mailto:glenlakeassociation@gmail.com). Your email address will not be shared with any other organization or business.**

## Is Boat Spraying Really Necessary?

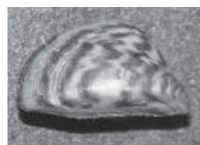
This column answers the most common questions regarding the Association's Boat Spraying/Boater Education Program.

Q. Given zebra mussels are already in Glen Lake, why should we continue the boat spraying/boater education program?

A. Glen Lake was one of the last northern Michigan lakes to be infested with zebra mussels, so we believe the program is effective. While zebra mussels eventually got into the lake, there are many other invasive species that we want to prevent from entering the lake. These include: Enteromorpha Algae, Quagga mussels, Rusty Crayfish, Round Gobys, Ruffe, Fishhook Water Flee, Spiny Water Flee, Eurasian Watermilfoil, Hydrilla, and VHS (Viral Hemorrhagic Septicemia).

Q. I've noticed the water looks clearer since the invasion of zebra mussels in Glen Lake. Isn't this a good thing?

A. While zebra mussels do increase water clarity, overall the damage they cause is much greater than their positive qualities. For example, they eat foods of native species, causing significant declines in native fish, mollusks, and birds. Improved water clarity causes an increase in plant life and algae, disrupting the water's ecosystem resulting in stinky rot and decay on lake bottoms/beaches and botulism, which has caused recent bird kills on Lake Michigan beaches. In addition, they create many practical problems including sharp shells on lake beaches and their attachment to all hard surfaces such as boats, engines, navigational buoys, dock, piers, water intake pipes, clams, etc.



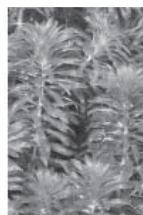
Q. Which invasive species are most threatening to Glen Lake today, and how would they damage it?

A. Some of the most threatening invasive species and their potential damage are as follows:

-Quagga Mussels: Similar to zebra mussels, only larger, they are able to survive in deeper, colder waters (such as Big Glen). They have the same damaging qualities of zebra mussels.

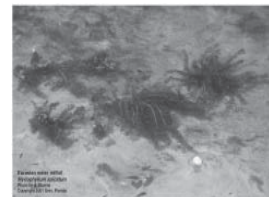
-Viral Hemorrhagic Septicemia (VHS): This is an

invasive species virus that threatens and kills fish. It has been found in Lake Michigan. Infected fish shed the virus into lakes through their urine and reproductive fluids. Healthy fish can be infected by absorbing the virus through their gills or by eating an infected fish. New rules by the Michigan Department of Natural Resources prohibit anglers, boaters and other water users from moving live fish and water from one water body to another. Fishermen entering Glen Lake at the boat launch are asked to document that their bait is VHS free. If not, the bait is discarded and not allowed to enter the lake.



-Hydrilla: Considered the most problematic aquatic plant in the United States, this invasive plant has been found 65 miles south of the Michigan border in Lake Manitou in Indiana. Hydrilla forms dense mats of vegetation that interfere with recreation and destroy fish and wildlife habitat. It is often an invisible menace until it fills the body of water it infects, "topping out" at the surface. All boats/trailers entering Glen Lake at the boat launch are examined for aquatic plants, which are removed when found.

-Eurasian Watermilfoil: Eurasian water milfoil is a non-native plant that spreads rapidly, blocking out sunlight needed for native plant growth. It threatens the integrity of aquatic communities in a number of ways including disruption of fish predator-prey relationships and reduction in the number of nutrient-rich native plants available for waterfowl. It also inhibits lake recreational uses like swimming, boating, and fishing due to matted vegetation on the lake and outbreaks of algae blooms. The boat wash program increases public awareness of this invasive species, inspecting all boats, motors, trailers, and fishing equipment entering the lake to make sure they are free of aquatic plants.



## Jump On In! The Water's Fine!

Memories of a fabulous summer linger as we find ourselves well into autumn now. The weather this past season seemed to be perfect for great days spent on the water. There was lots of activity on Big and Little Glen Lake, the Crystal River, and Big and Little Fisher Lake all summer long.

The Glen Lake Association (GLA) also had a busy and very successful summer.

As most of you know, our Association was named 2008 Michigan Inland Lake Steward of the Year by the Michigan Lake and Stream Associations. Their associations' assistant director, Scott Brown, said in his presentation that "the Glen Lake Association is head and shoulders above other groups in the state. We congratulate Glen Lake for bringing riparian owners up to speed in regards to ecological processes, issues and needs...we look at the GLA as the association that sets the pace for leadership."

It takes a lot of hard work by many dedicated individuals to make our association stand out over so many others in our state. We have created and maintained a wide range of very positive programs to make sure our water resources are protected. Our water quality monitoring, the merganser relocation effort, the invasive species and boater education program, and the aquatic plants survey are just a few of these programs that are ongoing, and very helpful to everyone in the Glen Lake Watershed.

It's up to all of us to help maintain and preserve the water resources in the Glen Lake area, and the Glen Lake Association is asking you to "Jump in and get involved!"



We are reaching out to all those who enjoy our beautiful lakes and rivers to help us maintain the high level of commitment it takes to protect our beautiful resources.

If you would like to become a new member or to renew an expired membership please fill out the donor card on the facing page and let us hear from you! We would also encourage existing members to make a special "end of the year" pledge to help us with our programs and operations over the winter months. And don't forget that you can also make a gift of any size to the Glen Lake Association to honor a loved one. There is information on these opportunities on the enclosed form. (facing page)

Thank you again for all your support of the Glen Lake Association. It's great to have so many wonderful and caring people involved in an association dedicated to preserving such a beautiful area.



*Watershed Biologist, Rob Karner*

The Annual Meeting of the Glen Lake Association was an information-packed session that covered topics from water levels and swimmer's itch to water quality issues. Over 150 riparians and members attending the meeting on Saturday, August 9, 2008 at The Leelanau School heard committee reports, voted on by-law changes and elected new board members.

Minutes from the GLA Annual Meeting are available by contacting Sallyanne at the GLA office. They are also posted on the website along with a news account of the proceedings with photos. Visit [www.glenlakeassociation.org](http://www.glenlakeassociation.org)



## Ways to Give

The Glen Lake Association is dedicated to preserving and protecting the Glen Lake/Crystal River Watershed and relies upon financial support from individuals, families, businesses and foundations. These stakeholders make possible the important water quality surveillance, testing and education that has been part of the association's mission since its founding in 1954.

Thank you for your financial support to help protect the Glen Lake/Crystal River Watershed!

### Renew or Become a New Member – Join Now for 2009!

*Your donation is tax deductible.*

#### Individual Memberships

Basic	\$50 to \$99
Contributor	\$100 to \$249
Sustaining	\$250 +

#### Family Memberships

Family Basic	\$125 to \$249
Family Contributor	\$250 to \$499
Family Sustaining	\$500 +

*(Please include names of family members)*

#### Business Memberships

Business Member	\$100 to \$249
Business Plus Member	\$250 + per year

\* Riparian members may vote on association matters at annual meetings

### Special Gifts

The Glen Lake Association appreciates any amount of funding anytime of year to help support the important work the organization performs on an ongoing basis. Contributions – restricted or unrestricted – will help GLA continue addressing issues of development, use and recreation.

### Memoriam / Honorarium

Gifts in memory of loved ones and friends along with honorarium contributions acknowledging individuals, businesses or groups are always welcome. Honorees and donors will be acknowledged in the association's newsletter.

## Ways You Can Help

### Donate by Mail

Make checks payable to the "Glen Lake Association" and mail to:  
 Glen Lake Association  
 PO Box 245  
 Glen Arbor, MI 49636

### Donate Online

Visit the development page on [www.glenlakeassociation.org](http://www.glenlakeassociation.org) to print a copy of the donor form and mail it with your check to the GLA address listed at left.

### Get Involved

The Glen Lake Association needs volunteers. Consider donating your time and expertise to the organization through the many opportunities that are available: water quality testing, office work, event planning and hosting, public relations, board membership and committee help. Call the GLA office or contact a board member to get involved.

*The Glen Lake Association is a 501(c)(3) non-profit organization, and all gifts are tax deductible as allowed by state and federal law.*

Indicate whether your contribution is a membership, a special gift to GLA, or memoriam or honorarium.

Membership - Individual Family Business (please circle one)

In the amount of \$ \_\_\_\_\_

Special Gift

In the amount of \$ \_\_\_\_\_

A gift to honor the memory of:

(Name) \_\_\_\_\_ in the amount of \$ \_\_\_\_\_

A gift to honor/celebrate:

(Name) \_\_\_\_\_ in the amount of \$ \_\_\_\_\_

\_\_\_\_ Check here if you do not wish your name to appear as a donor in the GLA newsletter.

*Please make your check payable to Glen Lake Association and send to:*

*PO Box 245, Glen Arbor, MI 49636.*

Name: \_\_\_\_\_ Phone: \_\_\_\_\_ Email: \_\_\_\_\_  
 Local Address: \_\_\_\_\_ City: \_\_\_\_\_ State: \_\_\_\_\_ Zip: \_\_\_\_\_  
 Winter Address: \_\_\_\_\_ City: \_\_\_\_\_ State: \_\_\_\_\_ Zip: \_\_\_\_\_

- Thank you for your support of the Glen Lake Association. An envelope is enclosed for your convenience. -



P.O. Box 245  
Glen Arbor, MI 49636

GLA Announces the Launch of  
Its New Website  
Get Your Association News  
Year-Round at  
[www.glenlakeassociation.org](http://www.glenlakeassociation.org)



*Glen Lake as viewed from the Dunes*

## GLEN LAKE ASSOCIATION

2008-2009

### BOARD OF DIRECTORS

#### OFFICERS

John Rockwood  
Andy DuPont  
Joan Kramps  
Joan Kramps  
Gary Humphreys

President  
Vice President  
Secretary  
Recording Secretary  
Treasurer

#### DIRECTORS

Shirley Hoagland  
Jack Laitala  
Sarah Litch  
Sue Meserve

Charles Ofenloch  
Carl Oleson  
Roy Pentilla  
Matt Wiesen

Watershed Biologist

Rob Karner

### GLEN LAKE ASSOCIATION OFFICE

P.O. Box 245  
Fax (after 2 rings)

231-334-7645  
231-334-7470

### COMMITTEE CHAIRS

Auxiliary  
Development  
  
Finance & Investment  
Fisheries, Wildlife, Recreation  
and Water Safety  
Historian  
Invasive Species  
Long Range Planning  
Membership & Records  
Newsletter  
Nominating  
Public Relations  
Swimmer's Itch  
Water Level  
Water Quality

Web Site Webmaster

Ann Davey  
Charles Ofenloch,  
John Pepler  
Gary Humphreys  
Carl Oleson

Joan Kramps  
Denny Becker  
John Rockwood  
Andy DuPont  
Sue Meserve  
James Dutmers  
Chuck Ofenloch  
Rob Karner  
Jack Laitala  
Sarah Litch  
Mike Litch  
Shirley Hoagland

### GLEN LAKE ASSOCIATION WEB SITE

[www.glenlakeassociation.org](http://www.glenlakeassociation.org)